

### Low Voltage Raceway Fittings and Junction Boxes

#### Splice Covers

HellermannTyton surface raceway systems are the ideal solution for routing communication and power cables. No need to break into existing walls - raceway systems are designed to route cable along wall surfaces. Made of a PVC material, components are durable and affordable; and the one-piece construction and adhesive tape backing make positioning and mounting easy. HellermannTyton offers a low voltage TSR system and a power rated TSRP system that are available in three different diameters to accommodate different cable and wire bundle and conduit sizes. Both systems include a complete line of fittings and junction boxes that allow for clean and professional installations. TSR surface raceway systems can be used to route a variety of communication cable, including high speed UTP and fiber optic cable.

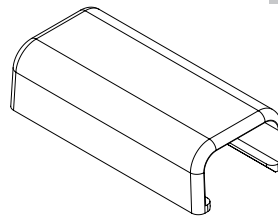
#### Features and Benefits

- Tamper resistant covers with hidden latch provide security while allowing quick entry for cable maintenance.
- PVC construction is lightweight, durable and more affordable than metallic raceway systems.
- Flexible hinge is designed to reduce stress cracking and discoloration from repeated opening and closing.
- Systems and fittings are available in white, office white and ivory to coordinate with a variety of décor.
- Fittings incorporate a minimum 1" bend radius to meet TIA/EIA 568-B and 569-A standards.



|                              |                         |
|------------------------------|-------------------------|
| <b>MATERIAL</b>              | Polyvinylchloride (PVC) |
| <b>Flammability</b>          | UL 94 V0                |
| <b>Operating Temperature</b> | +122°F (+50°C)          |

**RoHS** ✓



| PART NO.  | TYPE    | Description          | Color        | Pkg. Qty. |
|-----------|---------|----------------------|--------------|-----------|
| TSR1I-14  | TSR1-14 | Splice Cover, 3/4"   | Ivory        | 1         |
| TSR1FW-14 |         | Splice Cover, 3/4"   | Office White | 1         |
| TSR1W-14  |         | Splice Cover, 3/4"   | White        | 1         |
| TSR2I-14  | TSR2-14 | Splice Cover, 1-1/4" | Ivory        | 1         |
| TSR2FW-14 |         | Splice Cover, 1-1/4" | Office White | 1         |
| TSR2W-14  |         | Splice Cover, 1-1/4" | White        | 1         |
| TSR3I-14  | TSR3-14 | Splice Cover, 1-3/4" | Ivory        | 1         |
| TSR3FW-14 |         | Splice Cover, 1-3/4" | Office White | 1         |
| TSR3W-14  |         | Splice Cover, 1-3/4" | White        | 1         |

Dimensions are approximate and subject to technical changes. Use Part No. for ordering and Type for specification purposes.